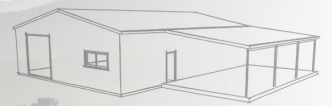


WIDE	LONG	STUD	BAY	SIZE	M ²	BOX PRICE	M ² RATE
6.20	6.20	2.40	2	3.10	38.4	10,187.78	265.03
6.20	7.70	2.60	2	3.85	47.7	11,759.15	246.32
6.95	7.70	2.60	2	3.85	53.5	12,331.66	230.43
6.95	12.30	3.20	3	4.10	85.5	16,772.13	196.20
7.70	12.30	3.00	3	4.10	94.7	17,693.59	186.82
7.70	16.10	3.60	4	4.03	124.0	23,152.32	186.76
9.25	12.30	3.00	3	4.10	113.8	18,857.36	165.74
9.25	20.00	3.80	5	4.00	185.0	29,758.70	160.86
10.00	12.30	3.20	3	4.10	123.0	20,390.67	165.78
10.00	16.10	3.60	4	4.03	161.0	26,654.91	165.56
10.00	20.00	4.00	4	5.00	200.0	31,234.34	156.17
10.00	16.10	4.60	4	4.03	161.0	29,329.98	182.17
11.50	12.30	3.00	3	4.10	141.5	21,749.31	153.76
11.50	16.10	3.60	4	4.03	185.2	28,047.44	151.48
11.50	18.40	4.60	4	4.60	211.6	34,935.55	165.10
12.30	16.10	3.60	4	4.03	198.0	29,681.01	149.88
12.30	18.40	4.20	4	4.60	226.3	34,113.48	150.73
12.30	20.00	4.80	4	5.00	246.0	40,069.44	162.88
12.30	26.05	4.20	5	5.21	320.4	46,773.99	145.98
13.80	12.30	3.60	3	4.10	169.7	27,158.53	160.00
13.80	16.90	4.40	4	4.23	233.2	35,808.11	153.54
13.80	20.00	4.80	4	5.00	276.0	43,417.34	157.31
15.35	20.00	4.00	4	5.00	307.0	46,208.43	150.52
15.35	15.35	4.50	3	5.12	235.6	38,689.11	164.20
15.35	23.75	6.00	5	4.75	364.6	61,565.80	168.88
16.10	12.30	4.30	3	4.10	198.0	35,007.77	176.78
16.10	34.50	4.80	6	5.75	555.5	79,016.13	142.26
16.90	18.40	4.40	4	4.60	311.0	48,826.45	157.02
16.90	25.30	4.80	5	5.06	427.6	62,098.73	145.24
18.40	37.50	4.00	7	5.36	690.0	86,607.43	125.52
18.40	34.50	4.40	7	4.93	634.8	81,239.11	127.98
20.00	25.30	4.80	5	5.06	506.0	73,408.81	145.08
22.25	49.95	6.00	9	5.55	1111.4	139,996.65	125.97





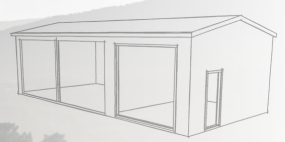
WIDE	LONG	STUD	BAY	SIZE	M ²	BOX PRICE	M ² RATE
3.15	12.30	2.60	3	4.10	38.7	6,015.33	155.25
3.15	12.30	3.10	3	4.10	38.7	6,350.00	163.89
3.15	12.30	3.60	3	4.10	38.7	6,866.43	177.22
3.90	12.30	2.60	3	4.10	48.0	6,838.12	142.55
3.90	12.30	3.10	3	4.10	48.0	7,150.80	149.07
3.90	12.30	3.60	3	4.10	48.0	7,753.31	161.63
4.65	12.30	2.60	3	4.10	57.2	7,799.82	136.37
4.65	12.30	3.10	3	4.10	57.2	8,152.88	142.55
4.65	12.30	3.60	3	4.10	57.2	8,816.41	154.15
5.40	12.30	2.60	3	4.10	66.4	8,334.76	125.49
5.40	12.30	3.10	3	4.10	66.4	8,706.66	131.08
5.40	12.30	3.60	3	4.10	66.4	9,727.48	146.45
6.20	12.30	2.60	3	4.10	76.3	9,346.32	122.56
6.20	12.30	3.10	3	4.10	76.3	9,752.49	127.88
6.20	12.30	3.60	3	4.10	76.3	10,511.73	137.84
6.95	12.30	2.60	3	4.10	85.5	10,282.10	120.28
6.95	12.30	3.10	3	4.10	85.5	10,719.82	125.40
6.95	12.30	3.60	3	4.10	85.5	11,531.24	134.89

WIDE	LONG	STUD	BAY	SIZE	M ²	BOX PRICE	M ² RATE
3.15	12.30	2.60	3	4.10	38.7	4,511.52	116.44
3.15	12.30	3.10	3	4.10	38.7	4,572.05	118.00
3.15	12.30	3.60	3	4.10	38.7	4,632.57	119.57
3.90	12.30	2.60	3	4.10	48.0	5,198.07	108.36
3.90	12.30	3.10	3	4.10	48.0	5,261.64	109.69
3.90	12.30	3.60	3	4.10	48.0	5,325.22	111.01
4.65	12.30	2.60	3	4.10	57.2	6,039.86	105.60
4.65	12.30	3.10	3	4.10	57.2	6,126.17	107.11
4.65	12.30	3.60	3	4.10	57.2	6,212.47	108.62
5.40	12.30	2.60	3	4.10	66.4	6,457.00	97.21
5.40	12.30	3.10	3	4.10	66.4	6,543.30	98.51
5.40	12.30	3.60	3	4.10	66.4	6,964.81	104.86
6.20	12.30	2.60	3	4.10	76.3	7,417.04	97.26
6.20	12.30	3.10	3	4.10	76.3	7,518.29	98.59
6.20	12.30	3.60	3	4.10	76.3	7,619.54	99.92
6.95	12.30	2.60	3	4.10	85.5	8,303.82	97.14
6.95	12.30	3.10	3	4.10	85.5	8,418.49	98.48
6.95	12.30	3.60	3	4.10	85.5	8,533.13	99.82

ENCLOSED LEAN TO

OPEN LEAN TO





DIY HOW TO GUIDE

- 1 Choose a building size that suits your requirements from the Gable Shed price list. You will see a box price, this is the kitset price; use this in the form below. It does not include any doors or windows at this point.
- 2 You can add an open lean to or an enclosed lean to from the lean to lists. Add the lean to box price to the form below.
- 3 You can add doors and windows to your chosen box price from the lists below. The cost of these extras are estimates only.

IF YOU CANNOT FIND A SUITABLE BUILDING SIZE FOR YOUR REQUIREMENTS ON THE LIST:

- 1 Find a building size with a similar height and width and take note the M² rate and use form below.
- 2 Calculate how many M² of floor area the building that you require would have e.g. width x length = area M².
- 3 Use the M² rates that you noted in step 1 & 2 and continue filling out the form below. Finally add doors, windows etc for your estimate.

NOTE: This estimate is for a kitset only designed for medium wind zone. It includes structural calculations, and building plans.

ROLLER DOORS:

DOMESTIC	INDUSTRIAL HAND OPERATED	INDUSTRIAL CHAIN OPERATED
2.4 h x 2.6 w \$1000	2.4 h x 3.0 w \$1600	3.0 h x 3.0 w \$1700
3.0 h x 3.0 w \$1200	2.4 h x 4.0 w \$1800	3.4 h x 3.4 w \$2300
3.2 h x 3.2 w \$1400		3.8 h x 3.6 w \$2500
		4.2 h x 4.0 w \$2800
		4.5 h x 4.6 w \$3100

PERSONAL ACCESS DOORS AND ALUMINIUM JOINERY:

P A DOORS	WINDOWS	RANCH SLIDERS
2.0 h x 0.8 w solid \$1000	0.9 h x 0.6 w \$650	
2.0 h x 0.8 w glass \$1200	0.9 h x 0.9 w \$700	2.0 h x 1.8 w \$1800
	0.9 h x 1.8 w \$1000	2.0 h x 2.4 w \$2300

WIDTH	LENGTH	AREA M ²	M ² RATE	BOX PRICE
SHED				
<input type="text"/>	x <input type="text"/>	= <input type="text"/>	x <input type="text"/>	= \$ <input type="text"/>
LEAN TO				
<input type="text"/>	x <input type="text"/>	= <input type="text"/>	x <input type="text"/>	= \$ <input type="text"/>
<input type="text"/>	x <input type="text"/>	= <input type="text"/>	x <input type="text"/>	= \$ <input type="text"/>
DOORS / JOINERY				
<input type="text"/>	+ <input type="text"/>	+ <input type="text"/>	+ <input type="text"/>	= \$ <input type="text"/>

KITSET ESTIMATE \$ +GST and freight

